

ESSENTIAL KNOWLEDGE ORGANISER

YEAR 5 **SUMMER TERM** – THE CIRCLE OF LIFE

STICKY VOCABULARY - **PLANTS**

Life cycle	The series of changes that an animal or plant passes through from the beginning of its life until its death.
mature	When something matures, it is fully developed
anther	The part of a stamen that produces and releases the pollen.
stigma	The top of the centre part of a flower which takes in pollen.
bulb	A root shaped like an onion that grows into a flower or plant.
cell	The smallest part of an animal or plant that is able to function independently.
dispersed	Scattered, separated, or spread through a large area.
flower	The part of a plant which is often brightly coloured and grows at the end of a stem.
petal	Thin coloured or white parts which form part of the flower
fertilisation	Pollen reaches the new flower and travels to the ovary where it fertilises egg cells (ovules) to make seeds.
germination	If a seed germinates or if it is germinated, it starts to grow
ovary	A female organ which produces eggs.
ovule	A small egg.
petal	Thin coloured or white parts which form part of the flower.
pollen	A fine powder produced by flowers. It fertilises other flowers of the same species so that they produce seeds.
pollination	To pollinate a plant or tree means to fertilise it with pollen. This is often done by insects.
stigma	The top of the centre part of a flower which takes in pollen.



KEY INFORMATION

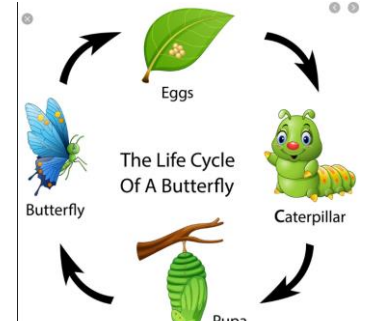
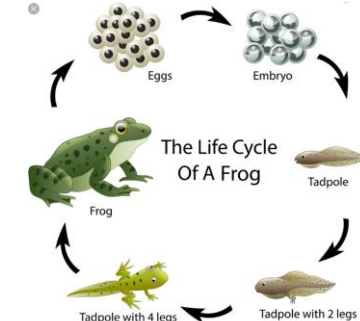
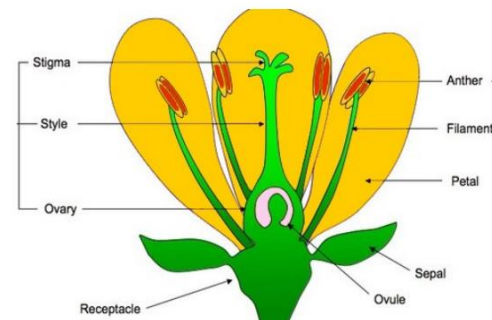
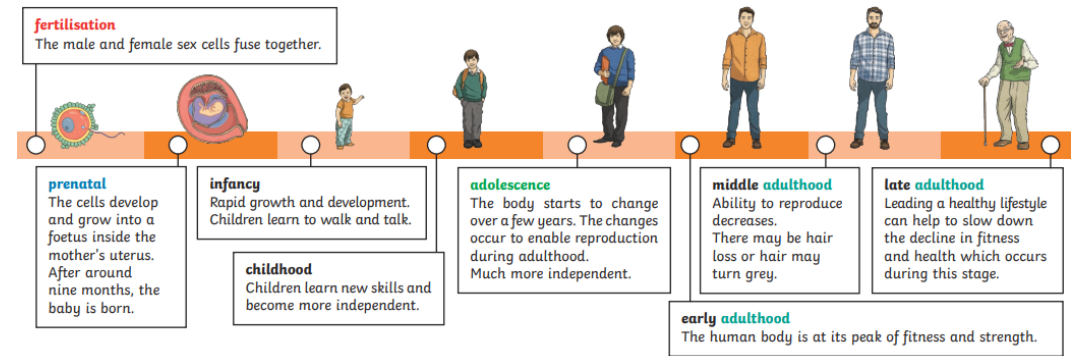
What is reproduction?	<p>Reproduction is when an animal or plant produces one or more individuals similar to itself.</p> <p>Sexual reproduction: requires two parents with male and female gametes (cells) and will produce offspring that is similar to but not identical to the parent.</p> <p>Asexual reproduction: will produce offspring that is identical to the parent but requires only one parent.</p>
------------------------------	--

STICKY VOCABULARY - **HUMANS**

embryo	an unborn animal or human being in the very early stages of development
fertilisation	male and female gametes meet to form an embryo
gamete	The name for the two types of male and female cell that join together to make a new creature
metamorphosis	A person or thing develops and changes into something completely different

KEY PEOPLE

Jane Goodall 1934 - current	A well known British scientist and animal rights campaigner, she is famous for her detailed studies of chimpanzees in Tanzania, observing how they interacted in family and social situations.	
David Attenborough 1926 - current	An English broadcaster and natural historian. He is famous for travelling the world and presenting documentaries about plants and animals.	



ESSENTIAL KNOWLEDGE ORGANISER

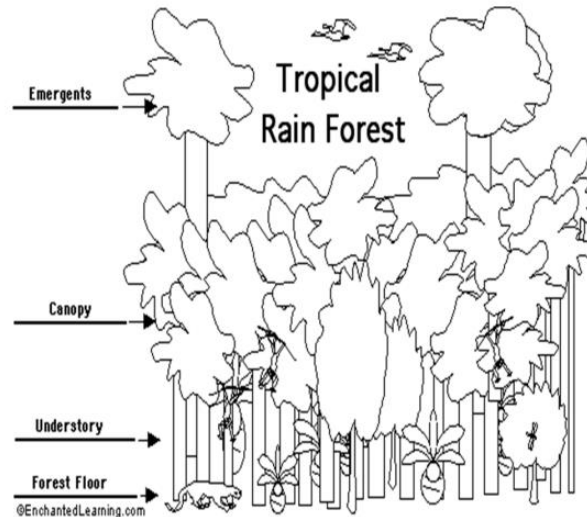
YEAR 5 SUMMER TERM – THE CIRCLE OF LIFE



KEY INFORMATION

Continent	South America
Largest 3 countries	Brazil, Argentina, Peru
Largest City	Sao Paulo, Brazil – the largest city in South America
Key Physical Features	Amazon River Andes Mountain Range – longest in the world Lake Titicaca Rainforests Volcanoes Atacama desert – driest in the world
Key Human Features	Christ the Redeemer (statue in Brazil) Machu Picchu (Inca citadel in Peru)
Marajoara Tribe	Indigenous people of Brazil that live within the Amazon.

A MAP OF SOUTH AMERICA:



STICKY VOCABULARY

continent	A large area of land that is made up of several countries.
ocean	A large area of sea.
equator	An imaginary line around the middle of the Earth.
human feature	A man-made feature of a place.
physical feature	A natural feature of a place.
settlement	A place where a group of people live together.
biome	A large area inhabited by plants and animals that live together.
vegetation belt	Plant life within a certain area.
natural resources	Natural materials that can be used or sold by people.
rainforest	A forest that receives a large amount of rainfall all year round.
indigenous	Belonging to a country in which they were first found rather than being brought there from another country.
tribe	A group of people who live together, sharing the same language, culture and history.

MARAJOARA POTTERY:

